

Technical Data Sheet

CODE 12613

VORTICE 150/6" ARI

Wall/window axial fans



Certifications



IMQ



CE



IMQ Performance



C Tick Mark

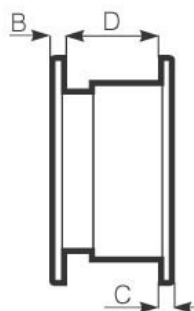


EAC

TECHNICAL AND PERFORMANCE DATA

Absorbed Current max (A)	0,11	Voltage (V)	220-240
Absorbed Power max (W)	25	Weight (Kg)	2,52
Frequency (Hz)	50/60	Delivery max - Extract (l/s)	61,1
Inlet	Automatico	Delivery max - Extract (m3/h)	220
Insulation Class	II°	Delivery max - Intake (l/s)	36,1
IP	X4	Delivery max - Intake (m3/h)	130
Max absorbed Power at 60Hz (W)	25	Delivery max (m³/h)	220
Max ambient temperature for continuous operation (°C)	50	RPM	1330
Max ambient temperature for continuous operation 60Hz (°C)	50	Rpm - Exhaust	1330
Ø Discharge Hole (mm)	150	Rpm - Supply	2520
		Sound Pressure level Lp [dB (A)] 3m	38,2

DIMENSIONS



Etichetta Energetica	N0
Ø glass hole	185/190
Ø wall hole	260/265
Size A (mm)	300
Size B (mm)	9,5
Size C (mm)	10,5
Size D (mm)	135
Size E (mm)	2/38

PER INFORMAZIONI:

Servizio al Cliente: tel +39 02 90699395 premendo 1 dopo messaggio registrato (consulenza su prodotti e impianti)

Pre & Post Vendita: fax +39 02 90699302

Email prevendita: prevendita@vortice-italy.com

Technical Data Sheet

CODE 12613

VORTICE 150/6" ARI

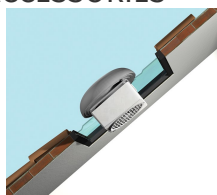
Wall/window axial fans



DESCRIPTION

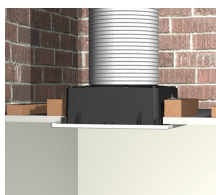
- Model designed for installation recessed into wall.
- Material: UV resistant ABS plastic (prevents ageing caused by exposure to sunlight)
- Nominal diameter 150 mm.
- Motor protected against thermal overload, with shaft turning in self-lubricating bushings, coupled to screw type thermoplastic impeller
- with wing profile blades.
- Maximum extract air flow: 220 m³/h
- Maximum supply air flow 130 m³/h
- IMQ SAFETY and IMQ PERFORMANCE certifications
- Vortice speed controller.

ACCESSORIES



KIT TE 150/6"
(TORRETTO)

Code 13001



KIT SO
(SOFFITTO)

Code 13012



KIT ML 150/6"
(MURO LARGO)

Code 13015



KIT TC 150/6"
(TETTO CON
CONDOTTO)

Code 13027

PER INFORMAZIONI:

Servizio al Cliente: tel +39 02 90699395 premendo 1 dopo messaggio registrato (consulenza su prodotti e impianti)

Pre & Post Vendita: fax +39 02 90699302

Email prevendita: prevendita@vortice-italy.com